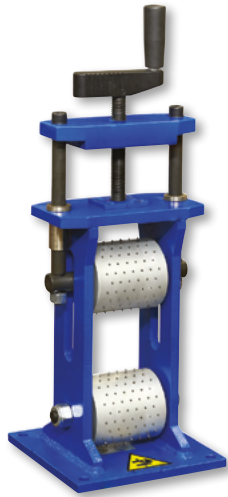


## PRT 1080

Code: PRT1080

CUTTING - TAGLIO



## ANALOGUE METER COUNTER

Code: CONTAMETRI

CUTTING - TAGLIO

UNIVERSAL BALANCING  
ARMS AND ROLLER GUIDES  
(HOSES Ø 1/4"-1")  
BRACCI BASCULANTI E GUIDE  
RULLO UNIVERSALI  
(TUBI Ø 1/4"-1")



### MAIN FEATURES - CARATTERISTICHE PRINCIPALI



Manually operated

Azionamento manuale



Suitable for all  
cutting machines

Adatto a tutte le tipologie  
di toglierine

**ANALOGUE  
METER COUNTER**



Precise measurement

Precisione di misurazione

**ANALOGUE  
METER COUNTER**



Adjustable height

Altezza regolabile

**ANALOGUE  
METER COUNTER**

#### TECHNICAL DATA - DATI TECNICI

PRT 1080

	PRT 1080
<b>DIMENSIONS LxWxH</b> DIMENSIONI LxPxH	170x170x475 mm
<b>WEIGHT</b> PESO	11 Kg
<b>CAPACITY</b> CAPACITÀ	Ø 10 - 80 mm

#### TECHNICAL DATA - DATI TECNICI

ANALOGUE METER COUNTER

	ANALOGUE METER COUNTER
<b>DIMENSIONS LxWxH</b> DIMENSIONI LxPxH	840x510x780 mm
<b>WEIGHT</b> PESO	35 Kg
<b>CAPACITY</b> CAPACITÀ	Ø Min. 1/4" - Ø Max. 1"
<b>MEASURING TOLERANCE</b> (UNI EN) TOLLERANZA DI MISURAZIONE (UNI EN)	± 2%